

# 4<sup>th</sup> EAST BOHEMIA STRESS ECHOCARDIOGRAPHY ON-LINE COURSE

29. 9. 2023

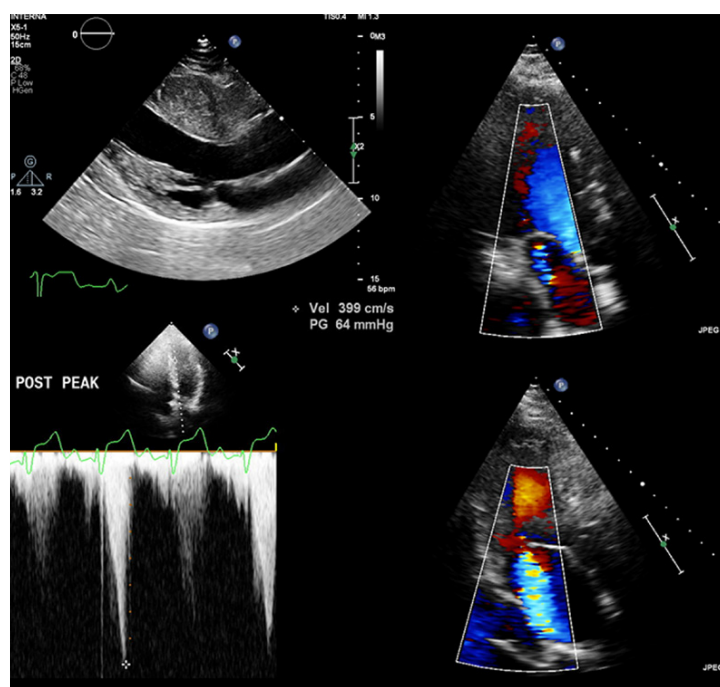
Event endorsed by



**EACVI**  
European Association of  
Cardiovascular Imaging



**British Society  
of Echocardiography**  
endorsed course





## Welcome to the 4<sup>th</sup> East Bohemia Stress Echocardiography On-line Course

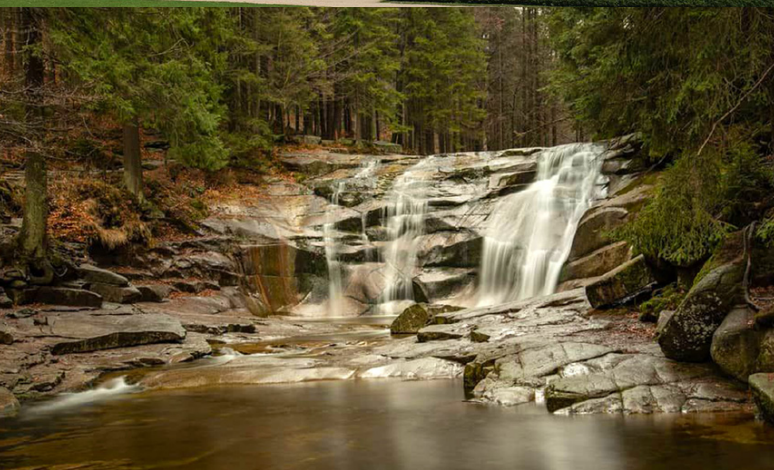
Dear colleagues,

Stress echocardiography plays important role not only in investigation of patients with known or suspected ischaemic heart disease, but also in valvular and structural heart disease. It benefits from being low cost and radiation-free method with high accuracy, which can be performed with minimal additional staffing or technical requirements.

The on-line course objective is to familiarise participants with the basic principles of the common stress echocardiography modalities used in the routine clinical practice. It is designed mainly for cardiologists and echocardiographers who are interested in stress echocardiography and want to set up or further develop their service. The lectures are accompanied by an illustrative case reports and will be available on demand for review to all the registered active participants after the course.

We are looking forward to meeting you on-line in September 2023!

*Dr Karel Medilek FRCP*  
Course director



**We thank to our sponsors:**

**s&t**

Authorised Distributor  
Philips Healthcare



LIFE FROM INSIDE

**PHILIPS**

### **8:50–9:00 Welcome**

### **9:00–10:30 Introduction to stress and contrast echocardiography**

- 1. Why functional imaging? The role of stress echocardiography in CAD**  
B Shah
- 2. Contrast echocardiography A to Z**  
A Borg
- 3. How to approach ischaemic stress echo studies**  
R Khattar

### **10:30–11:00 Break**

### **11:00–12:00 Stress echocardiography modalities in ischaemia testing**

- 4. Dobutamine stress echo**  
K Medilek
- 5. Vasodilator stress echo**  
N Gaibazzi
- 6. Exercise stress echo**  
A Borg

### **12:00–12:15 Break**

### **12:15–13:15 „Advanced“ stress echocardiography ischaemia testing**

- 7. Stress echo for viability**  
K Medilek
  - 8. Myocardial contrast echocardiography**  
R Senior
  - 9. Coronary flow reserve**  
N Gaibazzi
- Q&A 15 min.**

### **13:15–14:00 Break**

### **14:00–15:15 Stress echocardiography in non-ischaemic heart disease**

- 10. Stress echo in mitral valve disease**  
B Shah
- 11. Stress echo in aortic valve disease**  
R Khattar
- 12. Stress echo in cardiomyopathies**  
A Borg
- 13. Stress echo in diastolic dysfunction**  
J Hrecko

### **15:15–15:45 Guest lecture**

- 14. ABCDE + protocol**  
E Picano

### **15:45–16:15 Break**

### **16:00–17:30 Ischaemia stress echocardiography in clinical practice**

- 15. (Almost) live cases from stress echo lab**  
K Medilek
- 16. Case reports**  
panel
- 17. How to set up your stress echo lab**  
K Medilek

### **17:45 Closing remarks**



## Registration

Registration is possible on-line only and is confirmed upon the on-line payment at the time of registration. The registration fee is 30 €.

## Access to the course

The access code for the course will be available from the personal account created at the time of registration. Personal link will be sent to the registered e-mail before the course date. Lectures will be available for registered participants on demand until 31<sup>st</sup> December 2023.

## Continuous Professional Development (CPD) points

The course is accredited by European Board for Accreditation in Cardiology (EBAC) and was awarded 6 CME points.

Certificate of attendance will be distributed to the registered e-mail.

The number of CME points awarded will be based on the real tracked time spent viewing the course on-line or on demand (1 hour = 1 point).

## References

The programme is based on the following ESC guidelines/EACVI recommendations and expert consensus papers:

- 2019 ESC Guidelines for the diagnosis and management of chronic coronary syndromes: The Task Force for the diagnosis and management of chronic coronary syndromes of the European Society of Cardiology (ESC)
- 2017 Clinical practice of contrast echocardiography: recommendation by the European Association of Cardiovascular Imaging (EACVI)
- 2016 The clinical use of stress echocardiography in non-ischaemic heart disease: recommendations from the European Association of Cardiovascular Imaging and the American Society of Echocardiography
- 2009 Stress Echocardiography Expert Consensus Statement–Executive Summary: European Association of Echocardiography (EAE) (a registered branch of the ESC)

## Organising bodies

Faculty of Medicine Hradec Kralove, Charles University Prague, Czech Republic  
1st Department of Cardio-Angiology, University Hospital Hradec Kralove, Czech Republic

## Faculty

**Dr Alexander Borg**, Mater Dei Hospital, Msida, Malta

**Dr Nicola Gaibazzi**, Parma University Hospital, Parma, Italy

**Dr Juraj Hrecko**, University Hospital Hradec Kralove, Czech Republic

**Dr Rajdeep Khattar**, Royal Brompton Hospital, London, United Kingdom

**Dr Karel Medilek**, University Hospital Hradec Kralove, Czech Republic

**Professor Eugenio Picano**, Institute of Clinical Physiology Pisa, Italy

**Professor Roxy Senior**, Royal Brompton Hospital, London, United Kingdom

**Dr Benoy Shah**, University Hospital Southampton, United Kingdom

**Course language:** English

**Course website:** [www.stressechok.com](http://www.stressechok.com)

**Inquires:** [echok@lfhk.cuni.cz](mailto:echok@lfhk.cuni.cz)

**The course is endorsed by EACVI (European Association of Cardiovascular Imaging), BSE (British Society of Echocardiography) and organised under the auspices of Czech Society of Cardiology and Dean of Faculty of Medicine Hradec Kralove, Czech Republic.**